

GM CET General Knowledge & Current Affairs

Sample Paper – 6

Duration: 15 Minutes

Maximum Marks: 25

Instructions

- This paper contains **25** Multiple Choice Questions (Single Correct Answer), modelled on the **General Knowledge of News & Current Affairs** section of **GM CET** (Global Media Common Entrance Test).
- Each correct answer carries **+1 mark**. There is **no negative marking**. Unattempted questions receive **0** marks.
- Only **one** option is correct. Choose carefully.
- Syllabus level: **National & international current affairs, polity, history, geography, science, sports, media & press, and general awareness.**
- Use of mobile phones, calculators, or electronic gadgets is strictly prohibited.

Q1. The national flag shown below has three equal horizontal bands of black, red and gold. It is the flag of which country?



- (A) Germany
- (B) Belgium
- (C) Spain
- (D) Russia

Q2. The **BBC** (British Broadcasting Corporation), one of the world's oldest public broadcasters, is the public broadcaster of which country?

- (A) United States



- (B) United Kingdom
- (C) Canada
- (D) Australia

Q3. The press, because of its role as an informal watchdog of society alongside the legislature, executive and judiciary, is popularly called the:

- (A) First Estate
- (B) Third Estate
- (C) Fourth Estate
- (D) Fifth Estate

Q4. In India, the regulatory body **TRAI** regulates which sector?

- (A) Banking
- (B) Insurance
- (C) Aviation
- (D) Telecommunications

Q5. Who was the **first woman Prime Minister of India**?

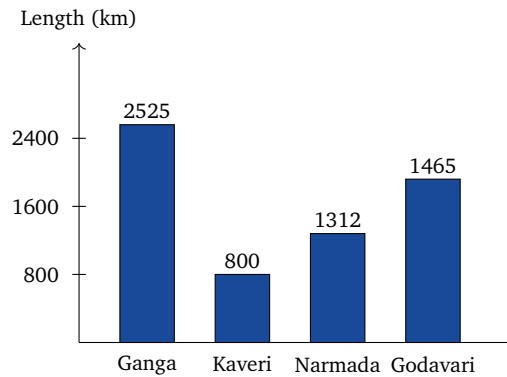
- (A) Indira Gandhi
- (B) Sarojini Naidu
- (C) Pratibha Patil
- (D) Sucheta Kripalani

Q6. The words **Sovereign, Socialist, Secular, Democratic, Republic** appear in which part of the Indian Constitution?

- (A) The Directive Principles
- (B) The Preamble
- (C) The Fundamental Duties
- (D) The Seventh Schedule

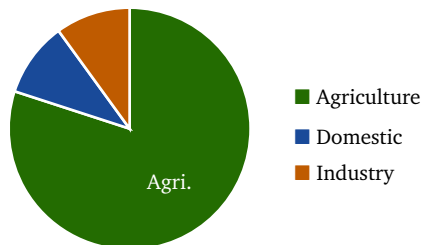


Q7. The bar chart below shows the approximate length (in km) of four Indian rivers. Which of these four rivers is the **longest**?



- (A) Kaveri
- (B) Godavari
- (C) Ganga
- (D) Narmada

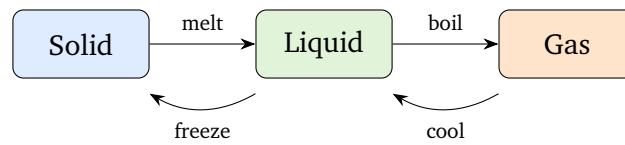
Q8. The pie chart below shows the broad share of water usage in India by sector. Which sector is the **largest** user of water?



- (A) Domestic / household use
- (B) Industry
- (C) Power generation
- (D) Agriculture

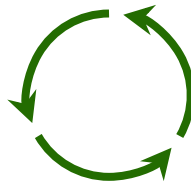
Q9. The diagram shows the three common states of matter and the transitions between them. Which state has both a **fixed shape** and a **fixed volume**?





- (A) Solid
- (B) Liquid
- (C) Gas
- (D) All three equally

Q10. The symbol shown below, made of three chasing arrows arranged in a triangle, is found on many products. What does it stand for?



- (A) Danger / hazard
- (B) Recycling
- (C) Wi-Fi connectivity
- (D) Renewable electricity

Q11. A short paragraph of text printed under a photograph in a newspaper, describing what the picture shows, is called a:

- (A) byline
- (B) masthead
- (C) caption
- (D) dateline

Q12. Which scientist is credited with formulating the **law of universal gravitation**?

- (A) Sir Isaac Newton



- (B) Galileo Galilei
- (C) Albert Einstein
- (D) Nicolaus Copernicus

Q13. The river **Brahmaputra** enters India through which state?

- (A) West Bengal
- (B) Sikkim
- (C) Nagaland
- (D) Arunachal Pradesh

Q14. Who gave the famous slogan “**Do or Die**” (“*Karo ya Maro*”) during the Quit India Movement of 1942?

- (A) Subhas Chandra Bose
- (B) Mahatma Gandhi
- (C) Bhagat Singh
- (D) Bal Gangadhar Tilak

Q15. The classical dance form **Kathakali** originated in which Indian state?

- (A) Tamil Nadu
- (B) Odisha
- (C) Kerala
- (D) Andhra Pradesh

Q16. Which is the **hardest naturally occurring substance** known on Earth?

- (A) Diamond
- (B) Iron
- (C) Quartz
- (D) Granite



- Q17.** Which is the **largest organ** of the human body?
- (A) Liver
 - (B) Brain
 - (C) Heart
 - (D) Skin
- Q18.** India's flagship financial-inclusion scheme that aims to provide every household with a basic bank account is the **Pradhan Mantri Jan Dhan Yojana**. It is mainly associated with:
- (A) building rural roads
 - (B) opening bank accounts for all
 - (C) supplying piped drinking water
 - (D) free school education
- Q19.** The **Goods and Services Tax (GST)**, a single indirect tax introduced across India, came into force in which year?
- (A) 2014
 - (B) 2015
 - (C) 2017
 - (D) 2019
- Q20.** The **Swachh Bharat Mission**, a nationwide cleanliness campaign launched in India, is primarily aimed at:
- (A) promoting cleanliness and sanitation
 - (B) digitising land records
 - (C) providing cooking-gas connections
 - (D) expanding metro railways
- Q21.** In which sport are the terms **“love”, “deuce” and “ace”** commonly used?



- (A) Hockey
- (B) Tennis
- (C) Badminton
- (D) Football

Q22. How many **bones** are there in the body of a normal adult human?

- (A) 187
- (B) 198
- (C) 212
- (D) 206

Q23. Which is the **largest gland** in the human body?

- (A) Thyroid gland
- (B) Pancreas
- (C) Liver
- (D) Salivary gland

Q24. At normal atmospheric pressure (sea level), water **boils** at a temperature of:

- (A) 100 degrees Celsius
- (B) 0 degrees Celsius
- (C) 50 degrees Celsius
- (D) 212 degrees Celsius

Q25. Indian scientist **C. V. Raman** was awarded the Nobel Prize in which field?

- (A) Chemistry
- (B) Physics
- (C) Medicine
- (D) Economics



Detailed Solutions

Q1.

Solution

Concept — National flags: Flags are identified by the order, direction and colour of their bands.

Key fact: A flag with three equal *horizontal* bands of black (top), red (middle) and gold (bottom) is the flag of *Germany*.

Why other options are wrong:

- (B) Belgium's tricolour is black, yellow and red but in *vertical* bands; (C) Spain's flag is red-yellow-red with an emblem; (D) Russia's flag is white, blue and red.

Final Answer: Germany ⇒

Answer: (A) [Go Back to Q 1](#)

Q2.

Solution

Concept — Public broadcasters: Many countries run a state-funded broadcaster that serves the public interest.

Key fact: The **BBC** (British Broadcasting Corporation), founded in 1922, is the public broadcaster of the *United Kingdom*.

Why other options are wrong:

- (A) The US public broadcaster is PBS; (C) Canada has the CBC; (D) Australia has the ABC — none of these is the BBC.

Final Answer: United Kingdom ⇒

Answer: (B) [Go Back to Q 2](#)



Q3.

Solution

Concept — Role of the press: In a democracy, the press informs citizens and holds power to account.

Key fact: The press is popularly called the *Fourth Estate*, a term that places it alongside the three traditional pillars (legislature, executive and judiciary).

Why other options are wrong:

- (A) “First Estate” and (B) “Third Estate” come from pre-revolution France (clergy and commoners); (D) “Fifth Estate” is sometimes used for social media, not the traditional press.

Final Answer: Fourth Estate ⇒

Answer: (C) [Go Back to Q 3](#)

Q4.

Solution

Concept — Regulatory bodies: India has separate regulators for different sectors.

Key fact: TRAI (Telecom Regulatory Authority of India), set up in 1997, regulates the *telecommunications* sector, including tariffs and service quality.

Why other options are wrong:

- (A) Banking is regulated by the RBI; (B) insurance by IRDAI; (C) aviation by the DGCA — not TRAI.

Final Answer: Telecommunications ⇒

Answer: (D) [Go Back to Q 4](#)

Q5.

Solution

Concept — Indian polity (heads of government): The Prime Minister heads the Union government.

Key fact: *Indira Gandhi* became the first woman Prime Minister of India in 1966.

Why other options are wrong:



- (B) Sarojini Naidu was the first woman Governor of an Indian state; (C) Pratibha Patil was the first woman *President*; (D) Sucheta Kripalani was the first woman *Chief Minister* (of Uttar Pradesh).

Final Answer: Indira Gandhi ⇒

Answer: (A) [Go Back to Q 5](#)

Q6.

Solution

Concept — The Constitution: The Preamble states the guiding ideals of the Constitution.

Key fact: The words *Sovereign, Socialist, Secular, Democratic, Republic* all appear in the *Preamble* (“Socialist” and “Secular” were added by the 42nd Amendment, 1976).

Why other options are wrong:

- (A) Directive Principles, (C) Fundamental Duties and (D) the Seventh Schedule deal with other matters and do not contain this declaration.

Final Answer: The Preamble ⇒

Answer: (B) [Go Back to Q 6](#)

Q7.

Solution

Concept — Data interpretation: On a bar chart, the longest river is the tallest bar.

Step 1 — Read the values: Ganga 2525 km, Kaveri 800 km, Narmada 1312 km, Godavari 1465 km.

Step 2 — Compare: The tallest bar is *Ganga* at about 2525 km, the longest of the four.

Why other options are wrong:

- (A) Kaveri is the shortest here; (B) Godavari and (D) Narmada are both shorter than the Ganga.

Final Answer: Ganga ⇒



Answer: (C) [Go Back to Q 7](#)

Q8.

Solution

Concept — Reading a pie chart: The largest user is the biggest slice of the circle.

Key fact: In India, *agriculture* (irrigation) accounts for by far the largest share of freshwater use — roughly 80% — shown as the dominant green slice.

Why other options are wrong:

- (A) Domestic use and (B) industry together make up only a small share; (C) power generation is not the leading category shown.

Final Answer: Agriculture ⇒

Answer: (D) [Go Back to Q 8](#)

Q9.

Solution

Concept — States of matter: Solids, liquids and gases differ in how their particles are arranged.

Key fact: A *solid* has both a fixed shape and a fixed volume, because its particles are tightly packed and vibrate in place.

Why other options are wrong:

- (B) A liquid has a fixed volume but takes the shape of its container; (C) a gas has neither a fixed shape nor a fixed volume; (D) the three states clearly differ, so “all three equally” is wrong.

Final Answer: Solid ⇒

Answer: (A) [Go Back to Q 9](#)



Q10.

Solution

Concept — Everyday symbols: Symbols communicate an idea without words.

Key fact: Three chasing arrows forming a triangle make up the universal *recycling* symbol, indicating that a material can be recycled.

Why other options are wrong:

- (A) Hazard symbols use a different design (often a triangle with an exclamation mark); (C) the Wi-Fi symbol is a set of curved arcs; (D) there is no standard “renewable electricity” arrow-triangle symbol.

Final Answer: Recycling ⇒

Answer: (B) [Go Back to Q 10](#)

Q11.

Solution

Concept — Newspaper terminology: Each part of a printed page has a specific name.

Key fact: The short text printed below a photograph to explain it is called a *caption*.

Why other options are wrong:

- (A) A byline names the writer of an article; (B) the masthead is the newspaper’s title block on the front page; (D) a dateline gives the place and date of a report.

Final Answer: Caption ⇒

Answer: (C) [Go Back to Q 11](#)

Q12.

Solution

Concept — History of science: Several scientists shaped our understanding of motion and gravity.

Key fact: *Sir Isaac Newton* formulated the *law of universal gravitation*, which states that every mass attracts every other mass with a force that depends on their masses



and the square of the distance between them.

Why other options are wrong:

- (B) Galileo studied falling bodies and motion but did not state the universal law; (C) Einstein later gave the general theory of relativity; (D) Copernicus proposed the heliocentric model of the solar system.

Final Answer: Sir Isaac Newton ⇒

Answer: (A) [Go Back to Q 12](#)

Q13.

Solution

Concept — Major rivers: The Brahmaputra is one of India's largest rivers by volume.

Key fact: Rising in Tibet, the *Brahmaputra* enters India through *Arunachal Pradesh* (where it is called the Siang/Dihang) before flowing into Assam.

Why other options are wrong:

- (A) West Bengal, (B) Sikkim and (C) Nagaland are not the point where the Brahmaputra enters India.

Final Answer: Arunachal Pradesh ⇒

Answer: (D) [Go Back to Q 13](#)

Q14.

Solution

Concept — Freedom struggle: The Quit India Movement of 1942 was a mass call to end British rule.

Key fact: *Mahatma Gandhi* gave the slogan “*Do or Die*” (*Karo ya Maro*) at the launch of the movement in August 1942.

Why other options are wrong:

- (A) Subhas Chandra Bose gave “Give me blood and I will give you freedom”; (C) Bhagat Singh popularised “Inquilab Zindabad”; (D) Tilak said “Swaraj is my birthright.”



Final Answer: Mahatma Gandhi ⇒

Answer: (B) [Go Back to Q 14](#)

Q15.

Solution

Concept — Classical dance: India has eight recognised classical dance forms, each tied to a region.

Key fact: *Kathakali*, known for its elaborate costumes and face make-up, originated in *Kerala*.

Why other options are wrong:

- (A) Bharatanatyam is from Tamil Nadu; (B) Odissi is from Odisha; (D) Kuchipudi is from Andhra Pradesh.

Final Answer: Kerala ⇒

Answer: (C) [Go Back to Q 15](#)

Q16.

Solution

Concept — Properties of materials: Hardness measures resistance to scratching.

Key fact: *Diamond*, a form of pure carbon, is the hardest naturally occurring substance and sits at the top (10) of the Mohs scale.

Why other options are wrong:

- (B) Iron, (C) quartz and (D) granite are all much softer and can be scratched by diamond.

Final Answer: Diamond ⇒

Answer: (A) [Go Back to Q 16](#)



Q17.

Solution

Concept — Human body: Organs vary greatly in size and surface area.

Key fact: The *skin* is the largest organ of the human body. It covers the entire outer surface and accounts for a large share of body weight, acting as a protective barrier.

Why other options are wrong:

- (A) The liver is the largest internal organ and gland, but smaller than the skin; (B) the brain controls the body but is not the largest; (C) the heart is a relatively small muscular organ.

Final Answer: Skin ⇒

Answer: (D) [Go Back to Q 17](#)

Q18.

Solution

Concept — Government schemes: Many schemes target financial inclusion.

Key fact: The *Pradhan Mantri Jan Dhan Yojana* (launched 2014) aims to open a basic bank account for every household, bringing the unbanked into the formal system.

Why other options are wrong:

- (A) Rural roads come under PMGSY; (C) piped water under Jal Jeevan Mission; (D) school education under schemes like Sarva Shiksha Abhiyan — not Jan Dhan.

Final Answer: Opening bank accounts for all ⇒

Answer: (B) [Go Back to Q 18](#)



Q19.

Solution

Concept — Indian taxation: GST replaced a web of indirect taxes with one tax.

Key fact: The *Goods and Services Tax* came into force on 1 July 2017 across India.

Why other options are wrong:

- (A) 2014, (B) 2015 and (D) 2019 are incorrect; the GST rollout is firmly dated to 1 July 2017.

Final Answer: 2017 ⇒

[Go Back to Q 19](#)

Q20.

Solution

Concept — National missions: Flagship missions tackle specific public goals.

Key fact: The *Swachh Bharat Mission* (launched 2014) is a nationwide campaign to promote *cleanliness and sanitation*, including building toilets and ending open defecation.

Why other options are wrong:

- (B) Land-record digitisation, (C) cooking-gas connections (Ujjwala) and (D) metro railways are separate programmes.

Final Answer: Promoting cleanliness and sanitation ⇒

[Go Back to Q 20](#)

Q21.

Solution

Concept — Sports terminology: Each sport has its own scoring vocabulary.

Key fact: *Tennis* uses the terms “love” (zero), “deuce” (40–40) and “ace” (an unreturned serve).

Why other options are wrong:

- (A) Hockey, (C) badminton and (D) football do not use “love” and “deuce” for scoring.



Final Answer: Tennis ⇒

Answer: (B) [Go Back to Q 21](#)

Q22.

Solution

Concept — Human skeleton: The skeleton gives the body its frame and protects internal organs.

Key fact: A normal *adult* human body has *206 bones*. (A newborn baby starts with about 300, many of which later fuse together.)

Why other options are wrong:

- (A) 187, (B) 198 and (C) 212 are incorrect; the standard count for an adult skeleton is firmly 206.

Final Answer: 206 ⇒

Answer: (D) [Go Back to Q 22](#)

Q23.

Solution

Concept — Glands in the body: A gland is an organ that produces and secretes substances such as enzymes or hormones.

Key fact: The *liver* is the largest gland in the human body. It secretes bile and carries out many vital functions such as detoxification and storage of nutrients.

Why other options are wrong:

- (A) The thyroid is a small endocrine gland in the neck; (B) the pancreas is much smaller than the liver; (D) the salivary glands are tiny by comparison.

Final Answer: Liver ⇒

Answer: (C) [Go Back to Q 23](#)



Q24.

Solution

Concept — Change of state: A liquid turns into vapour at its boiling point.

Key fact: At normal atmospheric pressure (sea level), water *boils at 100 degrees Celsius*. At this temperature it changes from the liquid state to steam.

Why other options are wrong:

- (B) 0 degrees Celsius is the freezing/melting point of water, not its boiling point; (C) 50 degrees Celsius is just warm water; (D) 212 is the boiling point on the Fahrenheit scale, not Celsius.

Final Answer: 100 degrees Celsius ⇒

Answer: (A) [Go Back to Q 24](#)

Q25.

Solution

Concept — Indian Nobel laureates: A few Indian scientists have won the Nobel Prize.

Key fact: *C. V. Raman* won the Nobel Prize in *Physics* in 1930 for his work on the scattering of light, known as the Raman Effect.

Why other options are wrong:

- (A) Chemistry, (C) Medicine and (D) Economics are different Nobel categories; Raman's award was specifically in Physics for the Raman Effect.

Final Answer: Physics ⇒

Answer: (B) [Go Back to Q 25](#)



Answer Key

Q	Ans	Q	Ans	Q	Ans	Q	Ans	Q	Ans
1	A	2	B	3	C	4	D	5	A
6	B	7	C	8	D	9	A	10	B
11	C	12	A	13	D	14	B	15	C
16	A	17	D	18	B	19	C	20	A
21	B	22	D	23	C	24	A	25	B

