

IIT JAM 2023 BT Question Paper

Time Allowed :1 Hour	Maximum Marks :300	Total Questions :75
----------------------	--------------------	---------------------

General Instructions

Read the following instructions very carefully and strictly follow them:

1. The test is of 1 hour duration.
2. The question paper consists of 75 questions. The maximum marks are 300.
3. 4 marks are awarded for every correct answer, and 1 mark is deducted for every wrong answer.

Q1. Which one of the following compounds inhibits the polymerization of tubulin to microtubules in animal cells?

- (1) ATP
 - (2) Taxol
 - (3) Thymosin
 - (4) Vinblastine
-

Q2. Arrange the following elements in increasing order of their electronegativity according to the Pauling scale: C, Na, Be, and Br.

- (1) Be, Na, C, Br
 - (2) Br, C, Na, Be
 - (3) Na, Be, C, Br
 - (4) Na, C, Be, Br
-

Q3. Which one of the following is NOT a plant vascular tissue?

- (1) Phloem
 - (2) Periderm
 - (3) Stele
 - (4) Xylem
-

Q4. A growing shoot of a germinating seedling encounters an underground obstacle. Which one of the following hormones elicits the 'triple response' to the underground obstacle?

- (1) Auxin
- (2) Cytokinin
- (3) Ethylene

(4) Gibberellins

Q5. Which one of the following pairs of antibodies contains 'J-chain' in their multimeric form?

- (1) IgA and IgE
 - (2) IgA and IgM
 - (3) IgD and IgE
 - (4) IgD and IgG
-

Q6. Restriction enzymes that recognize the same nucleotide sequence but cleave at different positions are called:

- (1) heterohypekomers
 - (2) isocaudomers
 - (3) isoschizomers
 - (4) neoschizomers
-

Q7. Which one of the following does NOT belong to the freshwater ecosystem?

- (1) Estuary
 - (2) Lentic
 - (3) Lotic
 - (4) Wetland
-

Q8. Which one of the following is transcribed by RNA polymerase III in eukaryotes?

- (1) 18S rRNA
 - (2) 28S rRNA
 - (3) miRNA
 - (4) tRNA
-

Q9. Given the following sets:

$$A = \{2, 4, 6, 8, 10, 12\}$$

$$B = \{8, 10, 12, 14, 16, 18\}$$

$$C = \{7, 8, 9, 10, 11, 12, 13\}$$

Find $(A \cap B) \cup (B \cap C)$.

- (1) $\{8, 10, 12, 14\}$
- (2) $\{8, 10, 12\}$
- (3) $\{7, 8, 10, 11, 12, 13, 14\}$
- (4) $\{4, 6, 7, 8, 10, 11, 12, 13\}$

Q10. Rain is falling vertically with a speed of 40 m/s. Wind starts blowing with a speed of 16 m/s from west to east. How should a person, who is standing, hold his umbrella to avoid getting wet?

- (1) At an angle of about 22° with vertical towards east
- (2) At an angle of about 22° with vertical towards west
- (3) At an angle of about 66° with vertical towards east
- (4) At an angle of about 66° with vertical towards west

Q11. Which one of the following statements about the G1 checkpoint of the eukaryotic cell division cycle is INCORRECT?

- (1) Cell assures the existence of favorable extracellular environment
- (2) Cell assures the DNA has no damage
- (3) Cell assures the damaged DNAs are directed for repair mechanism
- (4) Cell assures complete replication of DNA

Q12. Determine the correctness or otherwise of the following Assertion [a] and the Reason [r].

Assertion [a]: Nitric oxide is involved in transient paracrine and autocrine signaling.

Reason [r]: Nitric oxide is highly reactive, with a lifetime of few seconds, yet can diffuse freely across membranes.

- (1) Both [a] and [r] are true and [r] is the correct reason for [a]
- (2) Both [a] and [r] are true but [r] is not the correct reason for [a]
- (3) Both [a] and [r] are false
- (4) Only [a] is true but [r] is false

Q13. In mice, a trait is determined by a dominant allele Y and a recessive allele y. What proportion of the offspring from a $YY \times yy$ cross is expected to be homozygous recessive in the F1 generation?

- (1) 0
- (2) 0.25
- (3) 0.5
- (4) 1

Q14. Match the molecules in Group I with the type of bonds present in them, in Group II.

Group I

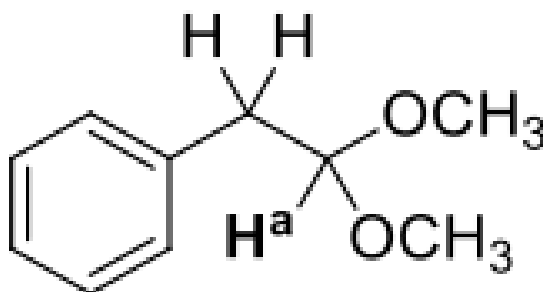
- P) NaCl
Q) H₂
R) Pd–P bond in Pd(PPh₃)₄
S) C–Cl bond in CH₃Cl

Group II

- 1) Coordination bond
2) Polar covalent bond
3) Covalent bond
4) Ionic bond

- (1) P-4, Q-1, R-3, S-2
(2) P-2, Q-3, R-1, S-4
(3) P-4, Q-3, R-1, S-2
(4) P-4, Q-3, R-2, S-1

Q15. What is the splitting pattern of proton H^a of the following compound in its 1H NMR spectrum?



- (1) Doublet
(2) Doublet of doublet
(3) Multiplet
(4) Triplet

Q16. Which one of the following statements is correct about solute transport across membranes?

- (1) Passive transporters decrease the activation energy and do not facilitate the transport of polar compounds
(2) The direction in which a charged solute tends to move spontaneously across a membrane does not depend on the electrical gradient across the membrane
(3) All ABC transporters do not have nucleotide binding domain
(4) P-type ATPases get reversibly phosphorylated as a part of transport cycle

Q17. Match the type of DNA repair mechanism in Group I with the enzyme(s) involved in Group II.

Group I

- P) Mismatch repair
- Q) Base excision repair
- R) Nucleotide excision repair
- S) Double strand break repair

Group II

- 1) DNA glycosylase
- 2) UvrA, UvrB, UvrC, and UvrD
- 3) RecA
- 4) MutL, MutS, and MutH

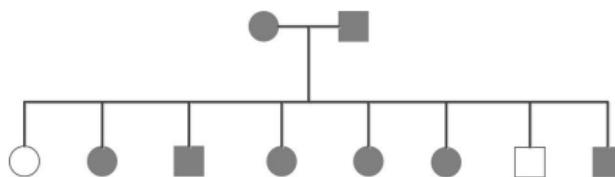
- (1) P-4, Q-1, R-3, S-2
 - (2) P-4, Q-2, R-1, S-3
 - (3) P-4, Q-1, R-2, S-3
 - (4) P-2, Q-1, R-4, S-3
-

Q18. Tetracycline binds to the:

- (1) 30S subunit and inhibits aminoacyl-tRNA binding
 - (2) 50S subunit and inhibits aminoacyl-tRNA binding
 - (3) 30S subunit and prevents codon:anticodon interactions
 - (4) 50S subunit and blocks exit of growing polypeptide chain
-

Q19. In the 'Southern blot' technique, which of the following reagents is used to detect the presence of a desired DNA fragment?

- (1) Ethidium bromide
 - (2) DNA probe
 - (3) Silver nitrate
 - (4) DNase
-

Q20. The pedigree given below shows individuals affected (shaded circles/rectangles) by chronic hypertension. Assuming 100% penetrance, the inheritance of this trait is:

- (1) Autosomal dominant
 - (2) Autosomal recessive
 - (3) Sex-linked dominant
 - (4) Sex-linked recessive
-

Q21. Which one of the following statements about photoproteins in plants is INCORRECT?

- (1) Phytochromes are activated by red light
- (2) Phytochromes are inactivated by far-red light
- (3) Cryptochromes are sensitive to blue light
- (4) Phototropins are insensitive to blue light

Q22. Match the microorganisms in Group I with the human diseases in Group II.

Group I	Group II
P) <i>Treponema pallidum</i>	1) Sleeping sickness
Q) <i>Trypanosoma cruzi</i>	2) Whooping cough
R) <i>Trypanosoma gambiense</i>	3) Chagas disease
S) <i>Bordetella pertussis</i>	4) Syphilis

- (1) P-4, Q-3, R-1, S-2
- (2) P-1, Q-2, R-4, S-3
- (3) P-3, Q-1, R-2, S-4
- (4) P-2, Q-1, R-3, S-4

Q23. Which one of the following is correct in the case of conjugation of a high frequency recombination (Hfr) strain with an F^- strain of *E. coli*?

- (1) Recombination frequency is high, F factor transfer frequency is low
- (2) Recombination frequency is high, F factor transfer frequency is high
- (3) Recombination frequency is low, F factor transfer frequency is high
- (4) Recombination frequency is low, F factor transfer frequency is low

Q24. Determine the correctness or otherwise of the following Assertion [a] and Reason [r].

Assertion [a]: The cardiovascular organization called double circulation provides vigorous flow of blood to the brain, muscles, and other organs.

Reason [r]: The blood is pumped a second time after it loses pressure in the capillary beds of the lungs or skin.

- (1) Both [a] and [r] are true and [r] is the correct reason for [a]
- (2) Both [a] and [r] are true but [r] is not the correct reason for [a]
- (3) Both [a] and [r] are false
- (4) [a] is true but [r] is false

Q25. The inability in humans to taste capsaicin resides in a single gene difference between two alleles P and p. The allele P for tasting is dominant over the nontasting allele. In a population of 400 individuals in Hardy-Weinberg equilibrium, 64 are nontasters. How many individuals are heterozygous for the gene?

- (1) 64
 - (2) 128
 - (3) 144
 - (4) 192
-

Q26. A genetic linkage map represents the:

- (1) relative locations of genes on a chromosome
 - (2) distribution of the mutational hotspots
 - (3) phylogenetic linkage among organisms
 - (4) accurate physical distances among loci
-

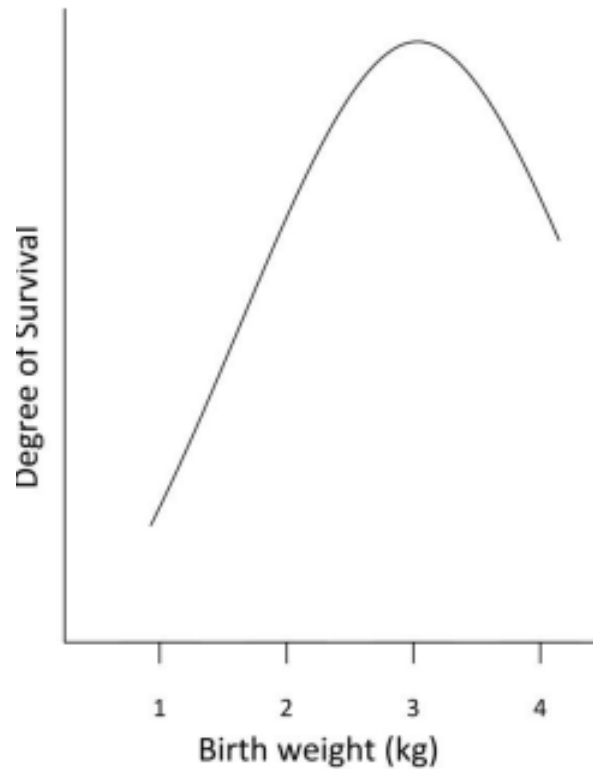
Q27. Class II MHC molecules are NOT expressed by:

- (1) B-cells
 - (2) dendritic cells
 - (3) macrophages
 - (4) T-cells
-

Q28. Which one of the following enzymes is required to ensure the replication of a negative-sense or negative-strand RNA virus?

- (1) DNA-dependent RNA polymerase
 - (2) DNA polymerase
 - (3) RNA-dependent DNA polymerase
 - (4) RNA-dependent RNA polymerase
-

Q29. The relationship between birth weight and degree of survival ($\log[\frac{\text{survivors}}{\text{non-survivors}}]$) in 6908 human births is shown below. The mode of selection for birth weight is:



- (1) directional
- (2) disruptive
- (3) diversifying
- (4) stabilizing

Q30. Match the recombinant DNA products in Group I with their applications in Group II.

Group I

- P) Tissue plasminogen activator
- Q) Erythropoietin
- R) Superoxide dismutase
- S) Interferon

Group II

- 1) Emergency treatment of heart attack
- 2) Treatment of anemia
- 3) Prevents tissue damage
- 4) Stimulates cells to inhibit viral replication

- (1) P-1, Q-2, R-3, S-4
- (2) P-1, Q-3, R-4, S-2
- (3) P-3, Q-1, R-4, S-2
- (4) P-4, Q-3, R-1, S-2

Q31. Which of the following statement(s) is/are correct about telophase?

- (1) Daughter chromosomes are yet to form
- (2) New nuclear envelope starts to reassemble
- (3) Division of cytoplasm begins

(4) Nuclear membrane disappears




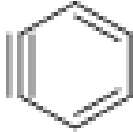
Q32. The characteristic morphological change(s) in cells undergoing apoptosis is/are:

- (1) Formation of blebs on cell surface
 - (2) Swelling and bursting of cells
 - (3) Collapse of the cytoskeleton
 - (4) Condensation and fragmentation of nuclear chromatin
-

Q33. A species of fish living in a lake are separated by drying up of the lake into two separate lakes. After several hundreds of years of separation, the two groups are unable to mate. These groups are now considered to be different:

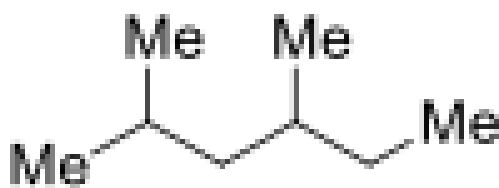
- (1) communities
 - (2) organisms
 - (3) populations
 - (4) species
-

Q34. Which of the following compound(s) is/are aromatic?

(A)	
(B)	
(C)	
(D)	

- (1) Compound A
 (2) Compound B
 (3) Compound C
 (4) Compound D

Q35. Which of the following statement(s) is/are correct for the given compound?



- (1) It can have a maximum of four stereoisomers
- (2) It can have a maximum of two stereoisomers
- (3) It is a chiral compound
- (4) It is an achiral compound

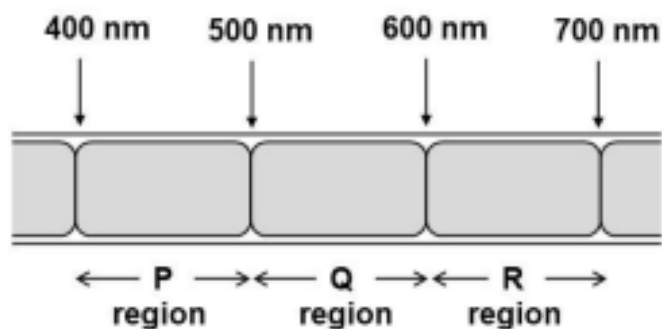
Q36. Which of the following is/are essential feature(s) of high-fidelity DNA polymerases used in polymerase chain reaction (PCR)?

- (1) 5→3 exonuclease activity
- (2) Endonuclease activity
- (3) 3→5 exonuclease activity
- (4) Optimum temperature for activity 72 °C

Q37. Which of the following option(s) represent(s) the evolutionary relationship between the bird and bat wings as structures for flying?

- (1) analogous
- (2) convergence
- (3) divergence
- (4) homologous

Q38. Different segments of a photosynthetic filamentous alga are exposed to different wavelengths of light as shown below. After a period of time, bacteria known to migrate towards high oxygen concentration are spread on the surface of the alga. Which region(s) of the alga will have maximum bacterial congregation?



- (1) P and R
- (2) P and Q
- (3) Only P
- (4) Only Q

Q39. Hyperventilation (breathing rapidly and deeply) causes which of the following event(s) in the arterial blood?

- (1) Decrease in CO_2 concentration
- (2) Decrease in proton concentration
- (3) Increase in pH
- (4) Increase in O_2 concentration

Q40. Which of the given statement(s) about synthetic oligonucleotides is/are correct?

- (1) Chemical synthesis extends the DNA chain from 3→5 end
- (2) They can be utilized for site-directed mutagenesis
- (3) Chemical synthesis extends the DNA chain from 5→3 end
- (4) They can be utilized as radiolabeled probes

Q41. The net number of molecule(s) of NADH formed from one molecule of glucose in glycolysis under aerobic conditions is/are

Q42. The number of possible unique combination(s) of linear tetrapeptides that can be made from four different amino acids using each amino acid only once in the chain is/are

Q43. Among i-BuNH_2 , NH_3 , Me_2NH , EtNH_2 , the number of compound(s) more basic than MeNH_2 is/are

Q44. Among K^+ , Li^+ , Rb^+ , Cs^+ , the number of cation(s) having ionic radii more than Na^+ is/are

Q45. Among the five fragments given below:

CH_2-CH_3 , CH_3-CH_3 , $CH_3-CH_2-CH_2$, $CH_2=CH-CH_2^+$, $[CH_3-CH_2-CH_3]^+$,

the number of fragment(s) accelerated to the analyzer tube in a mass spectrometer with electron ionization is/are

Q46. A restriction endonuclease has a recognition site of 3 bases. Assuming random arrangement of nucleotides, the probability that this endonuclease will cut a piece of DNA is (rounded off to three decimal places).

Q47. A massless ideal spring is hanging vertically. A sphere of mass 500 g, suspended from the spring, stretches the spring from its initial position by 50 cm when it reaches equilibrium. The force constant of the spring is $N\ m^{-1}$. (Use $g = 10\ m\ s^{-2}$)

Q48. Whales can dive undersea to depths of 2 km. The pressure on the whale at this depth (ignoring atmospheric pressure) is $\times 10^6\ Pa$. (Density of seawater = $1\ g\ cm^{-3}$ and $g = 10\ m\ s^{-2}$)

Q49. The order of the differential equation $\frac{d^3y}{dx^3} + 2\frac{d^2y}{dx^2} - 3\frac{dy}{dx} + 6x^4y = 0$ is

Q50. The value of $\lim_{x \rightarrow -3} \frac{2x+6}{x+3}$ is

Q51. The G° and K_{eq} values of ATP hydrolysis are $-32.34\ kJ\ mol^{-1}$ and 4.6×10 respectively. The G° and K_{eq} values of enzymatic hydrolysis of glucose-6-phosphate to glucose and phosphate are $-13.18\ kJ\ mol^{-1}$ and 203.8, respectively. The G° value of the reaction of glucose-6-phosphate formation from glucose and ATP by hexokinase is $kJ\ mol^{-1}$ (rounded off to two decimal places). [All reactions are carried out at pH 7.0 and $25^\circ C$.]

Q52. K_m and V_{max} of an enzyme preparation are 5 M and $30\ M\ min^{-1}$ respectively. Considering K_i value of competitive inhibitor is 60 M, the velocity (V) of this enzyme-catalyzed reaction in the presence of 200 M substrate and 600 M competitive inhibitor is $M\ min^{-1}$ (rounded off to two decimal places).

Q53. The heat required to convert 2 kg of water at $20^\circ C$ in a calorimeter to steam at $100^\circ C$ and at atmospheric pressure (1 atm) is kJ. (Specific heat capacity of water = $4.2\ kJ\ kg^{-1}\ K^{-1}$ and latent heat of steam = $2256\ kJ\ kg^{-1}$.)

Q54. An electron is accelerated from rest through a potential difference of 200 V. The de Broglie wavelength associated with this electron is _____ nm. (Rounded off to two decimal places) (Planck's constant = 6.6×10^{-34} J.s, 1 eV = 1.6×10^{-19} J, mass of an electron = 9.1×10^{-31} kg)

Q55. Given data consists of distinct values of x_i occurring with frequencies f_i . The mean value for the data is _____. (rounded off to one decimal place)

x_i	5	6	8	10
f_i	8	10	10	12

Q56. A random variable X and its probability distribution is given below. The value of $P(X = 5)$ is _____. (rounded off to one decimal place)

X	0	1	2	3	4	5
P(X)	0	k	2k	3k	6k	8k

Q57. A protein solution of 1 M has transmission of 40% at 280 nm, when measured in a 1 cm cuvette using a UV-Visible spectrophotometer. The transmission of the same solution, when measured using a 2 cm cuvette is _____ %. (rounded off to the nearest integer)

Q58. If a bacterial culture with a doubling time of 30 minutes starts with two cells, then the number of cells after 4 hours are _____.

Q59. The rate of transcription in a bacterium is 50 nucleotides/min and the average molecular weight of an amino acid is 110 Da. Time taken for synthesis of the mRNA of a protein with molecular weight of 110 kDa is _____ min. (rounded off to one decimal place)

Q60. Consider a first-order reaction $A \rightarrow B$. The initial concentration of A is 100 mol L^{-1} and the value of first-order rate constant is 0.01 min^{-1} . The concentration of A after 10 min of reaction is _____ mol L^{-1} (rounded off to one decimal place).
