

**FASHION DESIGNING**  
**PAPER 1**  
**(THEORY)**

U1000579

---

**Maximum Marks: 70**

**Time Allotted: Three Hours**

**Reading Time: Additional Fifteen minutes**

---

**Instructions to Candidates**

1. You are allowed an **additional fifteen minutes** for **only** reading the question paper.
2. You must **NOT** start writing during reading time.
3. This question paper has **7 printed pages and one blank page**.
4. There are **twelve** questions in the paper. All questions are compulsory.
5. This paper is divided into **three sections: A, B and C**.
6. **Section A** has **fourteen subparts** which are very short answer questions. Each question carries 1 mark.
7. While attempting **Multiple Choice Questions** in Section A, you are required to **write only ONE option as the answer**.
8. **Section B** has **seven questions** which are short answer questions. Each question carries 4 marks.
9. **Section C** has **four questions** which are long answer questions. Each question carries 7 marks.
10. **Internal choices** have been provided in **two questions in Section B** and in **one question in Section C**.
11. The intended marks for questions are given in brackets [ ].

**Instruction to Supervising Examiner**

1. Kindly read **aloud** the Instructions given on page 1 to all the candidates present in the examination hall.
-

## SECTION A – 14 MARKS

### Question 1

- (i) A new fashion trend emerged during 1914 in Europe which was characterised by a bell-shaped skirt and a wide overskirt worn by women. [1]  
This fashion trend was known as \_\_\_\_\_.
- (ii) A long continuous twisted strand of interlocked fibres, used in the production of textiles is called \_\_\_\_\_. [1]
- (iii) \_\_\_\_\_ refers to the strength or ability of a fibre to resist breaking. [1]
- (iv) In Melt Spinning method, the molten polymer from the spinneret is extruded into a \_\_\_\_\_ air stream to solidify the filaments. [1]
- (v) The twill weave method of fabric construction is characterised by the presence of a diagonal pattern or lines known as \_\_\_\_\_ that float across the surface of the fabric. [1]
- (vi) A multinational company is planning to order new uniforms for the construction workers employed in the construction of its new office. [1]  
Which one of the following qualities of fabric should be considered while making the uniforms for these workers?
- (a) Stain resistance
  - (b) Abrasion resistance
  - (c) Warmth and softness
  - (d) Lustre
- (vii) **Assertion:** Macrame method of fabric construction can be used to make decorative and functional items. [1]  
**Reason:** The items created by using this method are aesthetically appealing, durable and suitable for intended use.
- (a) Both Assertion and Reason are true and Reason is the correct explanation for Assertion.
  - (b) Both Assertion and Reason are true but Reason is not the correct explanation for Assertion.
  - (c) Assertion is true and Reason is false.
  - (d) Both Assertion and Reason are false.
- (viii) Which one of the following is a special feature observed in Maheshwari sarees? [1]
- (a) Heavily embroidered 'pallu'
  - (b) Zari embroidery
  - (c) Reversible border
  - (d) Mythological designs

(ix) Which one of the following is a remarkable fashion trend of the Roaring 1920s in Europe? [1]

- (a) S-bend corset
- (b) Flapper look
- (c) Hobble skirt
- (d) Barrel shaped silhouette

(x) While drying, polyester fabric does not retain water but drips it fast because: [1]

- (a) it has tenacity.
- (b) it is absorbent in nature.
- (c) it has elasticity.
- (d) it is hydrophobic in nature.

(xi) What type of fabric construction method is used to produce stretchable and breathable fabrics? [1]

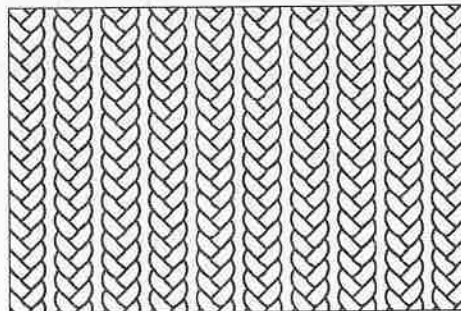
(xii) Shama has bought a Patola saree as a gift for her cousin who is leaving the country. [1]

Name the technique used in making the saree that Shama has bought.

(xiii) Identify the garment shown in the image below. [1]



(xiv) Mention *any one* item made by using the fabric construction method shown in the image below. [1]



## SECTION B – 28 MARKS

### Question 2

[4]

Define *two* major types of yarns. Cite one suitable example for each type.

### Question 3

[4]

List and briefly explain *any four* properties of textile serviceability that ensure the visual appeal of the garment.

### Question 4

[4]

State *any four* industrial uses of textiles.

### Question 5

[4]

Write a short note on the non-woven fabric in which webs are made and used as insulated interlining in making winter jackets.

### Question 6

- (i) As a part of an upcoming cultural fair in her college, Simran's batch has been given the responsibility of putting up a stall depicting the cultural richness of Rajasthan. Simran and her friends decide to wear the traditional costume of women of Rajasthan to show its cultural uniqueness.

- (a) Name the upper garment of the costume that Simran and her friends plan to wear. [1]
- (b) State the unique feature of the upper garment of this costume. [1]
- (c) Name the lower garment of the traditional costume for women referred to above. [1]
- (d) A broad cloth is sewn on the hem of the lower garment of the traditional costume of the women of Rajasthan, to strengthen it. [1]  
What is it known as?

OR

- (ii) Jignesh works in a textile factory and is involved in the making of viscose and acrylic yarns.

- (a) Which method does he use for making these yarns? [1]
- (b) Explain the steps involved in making these yarns. [3]

### Question 7

An NGO has planned to organise a blood donation camp. They want to spread awareness among the general public and encourage them to participate in this camp. They wish to display the relevant details on a simple banner that is made of a less durable and less lustrous fabric.

- (i) What sort of weave should the banner's fabric be made of? [1]
- (ii) Explain the fabric construction method of the weave referred to in subpart (i). [3]

### Question 8

[4]

- (i) Identify the traditional costume shown below. Explain *any three* features of the upper garment of this costume.



OR

- (ii) Identify the traditional costume shown below. Describe its draping style.



## SECTION C – 28 MARKS

### Question 9

- (i) Explain *any four* features of the *revolutionary fashions* of women during swinging sixties in Europe. [4]
- (ii) Discuss *three* types of garments worn by women during the period of *retro fever* in Europe. [3]

### Question 10

[7]

Provide *any seven* differences between Woven and Knitted fabrics with the help of suitable examples.

### Question 11

[7]

Discuss the recent developments and techniques used in making various types of fabrics in 21<sup>st</sup> century.

### Question 12

[7]

- (i) The traditional costume of fishermen of Maharashtra complements their occupation and ensures comfort and flexibility.

Draw a sketch of this traditional costume of men. Write a short note on the components of this costume.

OR

- (ii) One of the popular traditional ethnic outfits worn by the women of Lucknow consists of a short 'kurti' and flared pants usually worn on festivals and weddings.

Draw a sketch of this costume and write a short note on its components.

