

Zoology : Section-A (Q. No. 151 to 185)

151 Given below are statements: one is labelled as **Assertion A** and the other is labelled as **Reason R**.

Assertion A: Nephrons are of two types: Cortical & Juxta medullary, based on their relative position in cortex and medulla.

Reason R: Juxta medullary nephrons have short loop of Henle whereas, cortical nephrons have longer loop of Henle.

In the light of the above statements, choose the **correct** answer from the options given below:

- (1) **A** is false but **R** is true.
- (2) Both **A** and **R** are true and **R** is the correct explanation of **A**.
- (3) Both **A** and **R** are true but **R** is NOT the correct explanation of **A**.
- (4) **A** is true but **R** is false.

152 Match **List I** with **List II** with respect to human eye.

List I	List II
A. Fovea	I. Visible coloured portion of eye that regulates diameter of pupil.
B. Iris	II. External layer of eye formed of dense connective tissue.
C. Blind spot	III. Point of greatest visual acuity or resolution.
D. Sclera	IV. Point where optic nerve leaves the eyeball and photoreceptor cells are absent.

Choose the **correct** answer from the options given below:

- (1) A-II, B-I, C-III, D-IV
- (2) A-III, B-I, C-IV, D-II
- (3) A-IV, B-III, C-II, D-I
- (4) A-I, B-IV, C-III, D-II

153 Which of the following functions is carried out by cytoskeleton in a cell?

- (1) Transportation
- (2) Nuclear division
- (3) Protein synthesis
- (4) Motility

154 Given below are two statements:
Statement I: Ligaments are dense irregular tissue.

Statement II: Cartilage is dense regular tissue.

In the light of the above statements, choose the **correct** answer from the options given below:

- (1) **Statement I** is false but **Statement II** is true.
- (2) Both **Statement I** and **Statement II** are true.
- (3) Both **Statement I** and **Statement II** are false.
- (4) **Statement I** is true but **Statement II** is false.

155 Match **List I** with **List II**.

List I	List II
A. Heroin	I. Effect on cardiovascular system
B. Marijuana	II. Slow down body function
C. Cocaine	III. Painkiller
D. Morphine	IV. Interfere with transport of dopamine

Choose the **correct** answer from the options given below:

- (1) A-III, B-IV, C-I, D-II
- (2) A-II, B-I, C-IV, D-III
- (3) A-I, B-II, C-III, D-IV
- (4) A-IV, B-III, C-II, D-I

156 Which of the following is not a cloning vector?

- (1) Probe
- (2) BAC
- (3) YAC
- (4) pBR322

157 Which of the following are NOT considered as the part of endomembrane system?

- | | |
|-----------------|--------------------------|
| A. Mitochondria | B. Endoplasmic Reticulum |
| C. Chloroplasts | D. Golgi complex |
| E. Peroxisomes | |

Choose the **most appropriate** answer from the options given below:

- (1) A, D and E only
- (2) B and D only
- (3) A, C and E only
- (4) A and D only

- 158** Which of the following statements are correct regarding female reproductive cycle?
- In non-primate mammals cyclical changes during reproduction are called oestrus cycle.
 - First menstrual cycle begins at puberty and is called menopause.
 - Lack of menstruation may be indicative of pregnancy.
 - Cyclic menstruation extends between menarche and menopause.
- Choose the **most appropriate** answer from the options given below:
- A, C and D only
 - A and D only
 - A and B only
 - A, B and C only

- 159** Which one of the following techniques does not serve the purpose of early diagnosis of a disease for its early treatment?
- Enzyme Linked Immuno-Sorbent Assay (ELISA) technique
 - Recombinant DNA Technology
 - Serum and Urine analysis
 - Polymerase Chain Reaction (PCR) technique

- 160** Match **List I** with **List II**.

List I	List II
A. Ringworm	I. <i>Haemophilus influenzae</i>
B. Filariasis	II. <i>Trichophyton</i>
C. Malaria	III. <i>Wuchereria bancrofti</i>
D. Pneumonia	IV. <i>Plasmodium vivax</i>

Choose the **correct** answer from the options given below:

- A-III, B-II, C-IV, D-I
- A-II, B-III, C-IV, D-I
- A-II, B-III, C-I, D-IV
- A-III, B-II, C-I, D-IV

- 161** Given below are two statements: one is labelled as **Assertion A** and the other is labelled as **Reason R**.

Assertion A: Amniocentesis for sex determination is one of the strategies of Reproductive and Child Health Care Programme.

Reason R: Ban on amniocentesis checks increasing menace of female foeticide.

In the light of the above statements, choose the **correct** answer from the options given below:

- A is false but R is true.
- Both A and R are true and R is the correct explanation of A.
- Both A and R are true and R is NOT the correct explanation of A.
- A is true but R is false.

- 162** Given below are two statements:

Statement I: RNA mutates at a faster rate.

Statement II: Viruses having RNA genome and shorter life span mutate and evolve faster.

In the light of the above statements, choose the **correct** answer from the options given below:

- Statement I** false but **Statement II** is true.
- Both **Statement I** and **Statement II** are true.
- Both **Statement I** and **Statement II** are false.
- Statement I** is true but **Statement II** is false.

- 163** Given below are two statements:

Statement I: In prokaryotes, the positively charged DNA is held with some negatively charged proteins in a region called nucleoid.

Statement II: In eukaryotes, the negatively charged DNA is wrapped around the positively charged histone octamer to form nucleosome.

In the light of the above statements, choose the **correct** answer from the options given below:

- Statement I** incorrect but **Statement II** is true.
- Both **Statement I** and **Statement II** are true.
- Both **Statement I** and **Statement II** are false.
- Statement I** is correct but **Statement II** is false.

164 Match List I with List II.

List I	List II
A. <i>Taenia</i>	I. Nephridia
B. <i>Paramecium</i>	II. Contractile vacuole
C. <i>Periplaneta</i>	III. Flame cells
D. <i>Pheretima</i>	IV. Urecose gland

Choose the **correct** answer from the options give below:

- (1) A-II, B-I, C-IV, D-III
- (2) A-I, B-II, C-III, D-IV
- (3) A-I, B-II, C-IV, D-III
- (4) A-III, B-II, C-IV, D-I

165 Match List I with List II.

List I	List II
A. Gene 'a'	I. β -galactosidase
B. Gene 'y'	II. Transacetylase
C. Gene 'i'	III. Permease
D. Gene 'z'	IV. Repressor protein

Choose the **correct** answer from the options given below:

- (1) A-III, B-I, C-IV, D-II
- (2) A-II, B-I, C-IV, D-III
- (3) A-II, B-III, C-IV, D-I
- (4) A-III, B-IV, C-I, D-II

166 Match List I with List II.

List I	List II
A. Vasectomy	I. Oral method
B. Coitus interruptus	II. Barrier method
C. Cervical caps	III. Surgical method
D. Saheli	IV. Natural method

Choose the **correct** answer from the options given below:

- (1) A-IV, B-II, C-I, D-III
- (2) A-III, B-I, C-IV, D-II
- (3) A-III, B-IV, C-II, D-I
- (4) A-II, B-III, C-I, D-IV

167 Broad palm with single palm crease is visible in a person suffering from-

- (1) Thalassemia
- (2) Down's syndrome
- (3) Turner's syndrome
- (4) Klinefelter's syndrome

168 Given below are two statements: one is labelled as **Assertion A** and the other is labelled as **Reason R**.

Assertion A: Endometrium is necessary for implantation of blastocyst.

Reason R: In the absence of fertilization, the corpus luteum degenerates that causes disintegration of endometrium.

In the light of the above statements, choose the **correct** answer from the options given below:

- (1) **A** is false but **R** is true.
- (2) Both **A** and **R** are true and **R** is the correct explanation of **A**.
- (3) Both **A** and **R** are true but **R** is NOT the correct explanation of **A**.
- (4) **A** is true but **R** is false.

169 Vital capacity of lung is _____.

- (1) IRV + ERV + TV
- (2) IRV + ERV
- (3) IRV + ERV + TV + RV
- (4) IRV + ERV + TV - RV

170 Given below are two statements:

Statement I: A protein is imagined as a line, the left end represented by first amino acid (C-terminal) and the right end represented by last amino acid (N-terminal)

Statement II: Adult human haemoglobin, consists of 4 subunits (two subunits of α type and two subunits of β type.)

In the light of the above statements, choose the **correct** answer from the options given below:

- (1) **Statement I** is false but **Statement II** is true.
- (2) Both **Statement I** and **Statement II** are true.
- (3) Both **Statement I** and **Statement II** are false.
- (4) **Statement I** is true but **Statement II** is false.

171 Which one of the following common sexually transmitted diseases is completely curable when detected early and treated properly?

- (1) HIV Infection (2) Genital herpes
(3) Gonorrhoea (4) Hepatitis-B

172 Given below are two statements:

Statement I: Vas deferens receives a duct from seminal vesicle and opens into urethra as the ejaculatory duct.

Statement II: The cavity of the cervix is called cervical canal which along with vagina forms birth canal.

In the light of the above statements, choose the **correct** answer from the options given below:

- (1) **Statement I** incorrect but **Statement II** is true.
(2) Both **Statement I** and **Statement II** are true.
(3) Both **Statement I** and **Statement II** are false.
(4) **Statement I** is correct but **Statement II** is false.

173 Match **List I** with **List II**.

List I	List II
A. P - wave	I. Beginning of systole
B. Q - wave	II. Repolarisation of ventricles
C. QRS complex	III. Depolarisation of atria
D. T - wave	IV. Depolarisation of ventricles

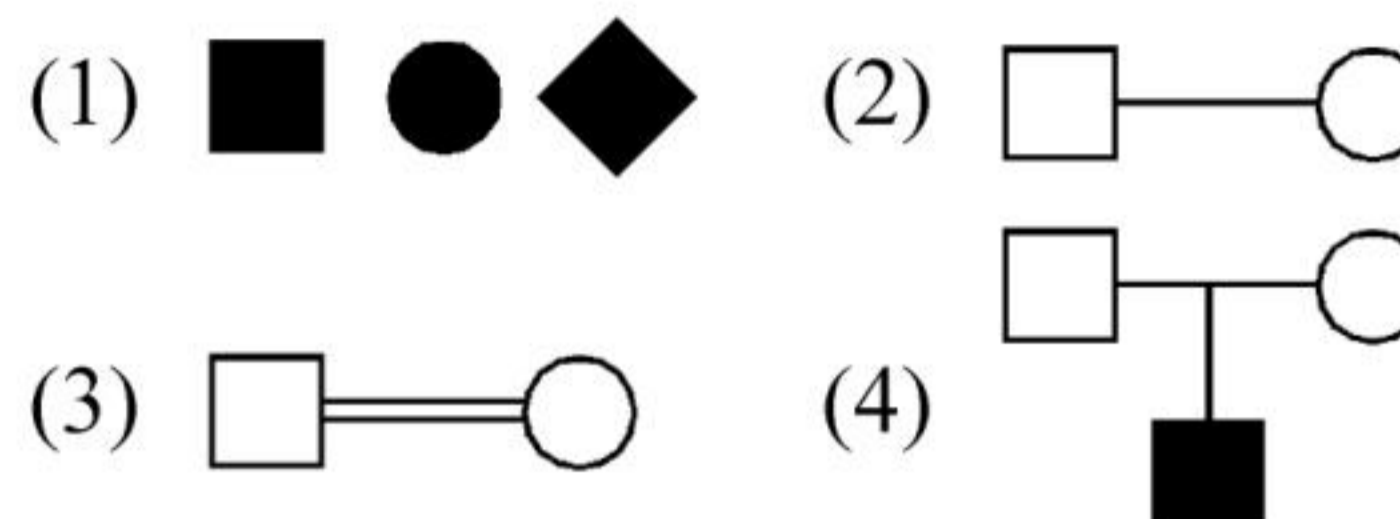
Choose the **correct** answer from the options given below:

- (1) A-I, B-II, C-III, D-IV
(2) A-III, B-I, C-IV, D-II
(3) A-IV, B-III, C-II, D-I
(4) A-II, B-IV, C-I, D-III

174 Radial symmetry is NOT found in adults of phylum _____.

- (1) Echinodermata (2) Ctenophora
(3) Hemichordata (4) Coelenterata

175 Which one of the following symbols represents mating between relatives in human pedigree analysis?



176 Select the correct group/set of Australian Marsupials exhibiting adaptive radiation.

- (1) Lemur, Anteater, Wolf
(2) Tasmanian wolf, Bobcat, Marsupial mole
(3) Numbat, Spotted cuscus, Flying phalanger
(4) Mole, Flying squirrel, Tasmanian tiger cat

177 Match **List I** with **List II**.

List I (Interacting species)	List II (Name of Interaction)
A. A Leopard and a Lion in a forest/ grassland	I. Competition
B. A Cuckoo laying egg in a Crow's nest	II. Brood parasitism
C. Fungi and root of a higher plant in Mycorrhizae	III. Mutualism
D. A cattle egret and a Cattle in a field	IV. Commensalism

Choose the **correct** answer from the options given below:

- (1) A-II, B-III, C-I, D-IV
(2) A-I, B-II, C-III, D-IV
(3) A-I, B-II, C-IV, D-III
(4) A-III, B-IV, C-I, D-II

178 Match List I with List II.

List I (Cells)	List II (Secretion)
A. Peptic cells	I. Mucus
B. Goblet cells	II. Bile juice
C. Oxyntic cells	III. Proenzyme pepsinogen
D. Hepatic cells	IV. HCl and intrinsic factor for absorption of vitamin B ₁₂

Choose the **correct** answer from the options given below:

- (1) A-II, B-IV, C-I, D-III
- (2) A-IV, B-III, C-II, D-I
- (3) A-II, B-I, C-III, D-IV
- (4) A-III, B-I, C-IV, D-II

179 Match List I with List II.

List I	List II
A. CCK	I. Kidney
B. GIP	II. Heart
C. ANF	III. Gastric gland
D. ADH	IV. Pancreas

Choose the **correct** answer from the options given below:

- (1) A-IV, B-II, C-III, D-I
- (2) A-IV, B-III, C-II, D-I
- (3) A-III, B-II, C-IV, D-I
- (4) A-II, B-IV, C-I, D-III

180 Once the undigested and unabsorbed substances enter the caecum, their backflow is prevented by-

- (1) Pyloric sphincter
- (2) Sphincter of Oddi
- (3) Ileo - caecal valve
- (4) Gastro - oesophageal sphincter

181 Match List I with List II.

List I (Type of Joint)	List II (Found between)
A. Cartilaginous Joint	I. Between flat skull bones
B. Ball and Socket Joint	II. Between adjacent vertebrae in vertebral column
C. Fibrous Joint	III. Between carpal and metacarpal of thumb
D. Saddle Joint	IV. Between Humerus and Pectoral girdle

Choose the **correct** answer from the options given below:

- (1) A-II, B-IV, C-III, D-I
- (2) A-III, B-I, C-II, D-IV
- (3) A-II, B-IV, C-I, D-III
- (4) A-I, B-IV, C-III, D-II

182 Which of the following statements is correct?

- (1) Algal Bloom decreases fish mortality
- (2) Eutrophication refers to increase in domestic sewage and waste water in lakes.
- (3) Biomagnification refers to increase in concentration of the toxicant at successive trophic levels.
- (4) Presence of large amount of nutrients in water restricts 'Algal Bloom'

- 183** Given below are two statements:
Statement I: Electrostatic precipitator is most widely used in thermal power plant.
Statement II: Electrostatic precipitator in thermal power plant removes ionising radiations
 In the light of the above statements, choose the *most appropriate* answer from the options given below:
- (1) **Statement I** incorrect but **Statement II** is correct.
 - (2) Both **Statement I** and **Statement II** are correct.
 - (3) Both **Statement I** and **Statement II** are incorrect.
 - (4) **Statement I** is correct but **Statement II** is incorrect.
- 184** In which blood corpuscles, the HIV undergoes replication and produces progeny viruses?
- (1) Eosinophils (2) T_H cells
 - (3) B-lymphocytes (4) Basophils
- 185** Given below are two statements:
Statement I: Low temperature preserves the enzyme in a temporarily inactive state whereas high temperature destroys enzymatic activity because proteins are denatured by heat.
Statement II: When the inhibitor closely resembles the substrate in its molecular structure and inhibits the activity of the enzyme, it is known as competitive inhibitor.
 In the light of the above statements, choose the **correct** answer from the options given below:
- (1) **Statement I** is false but **Statement II** is true.
 - (2) Both **Statement I** and **Statement II** are true.
 - (3) Both **Statement I** and **Statement II** are false.
 - (4) **Statement I** is true but **Statement II** is false.

- 186** Select the correct statements with reference to chordates.
- A. Presence of a mid-dorsal, solid and double nerve cord.
 - B. Presence of closed circulatory system.
 - C. Presence of paired pharyngeal gillslits.
 - D. Presence of dorsal heart
 - E. Triploblastic pseudocoelomate animals.
- Choose the **correct** answer from the options given below:
- (1) C, D and E only
 - (2) A, C and D only
 - (3) B and C only
 - (4) B, D and E only
- 187** Which of the following statements are correct regarding skeletal muscle?
- A. Muscle bundles are held together by collagenous connective tissue layer called fascicle.
 - B. Sarcoplasmic reticulum of muscle fibre is a store house of calcium ions.
 - C. Striated appearance of skeletal muscle fibre is due to distribution pattern of actin and myosin proteins.
 - D. M line is considered as functional unit of contraction called sarcomere.
- Choose the *most appropriate* answer from the options given below:
- (1) C and D only
 - (2) A, B and C only
 - (3) B and C only
 - (4) A, C and D only
- 188** Which one of the following is the sequence on corresponding coding strand, if the sequence on mRNA formed is as follows 5' AUCGAUCGAUCGAUCG AUCG AUCG 3'?
- (1) 3' ATCGATCGATCGATCGATCG ATCGATCG 5'
 - (2) 5' UAGCUAGCUAGCUAGCUA GCUAGC UAGC 3'
 - (3) 3' UAGCUAGCUAGCUAGCUA GCUAGCUAGC 5'
 - (4) 5' ATCGATCGATCGATCGATCG ATCGATCG 3'



- 189** Given below are two statements:
Statement I: During G_0 phase of cell cycle, the cell is metabolically inactive.
Statement II: The centrosome undergoes duplication during S phase of interphase.
 In the light of the above statements, choose the **most appropriate** answer from the options given below:
- (1) **Statement I** is incorrect but **Statement II** is correct.
 - (2) Both **Statement I** and **Statement II** are correct.
 - (3) Both **Statement I** and **Statement II** are incorrect.
 - (4) **Statement I** is correct but **Statement II** is incorrect.
- 190** Which of the following are NOT under the control of thyroid hormone?
- A. Maintenance of water and electrolyte balance
 - B. Regulation of basal metabolic rate
 - C. Normal rhythm of sleep-wake cycle
 - D. Development of immune system
 - E. Support the process of R.B.Cs formation
- Choose the **correct** answer from the options given below:
- (1) D and E only (2) A and D only
 - (3) B and C only (4) C and D only
- 191** In cockroach, excretion is brought about by-
- A. Phallic gland B. Urecose gland
 - C. Nephrocytes D. Fat body
 - E. Collateral glands
- Choose the **correct** answer from the options given below:
- (1) B and D only
 - (2) A and E only
 - (3) A, B and E only
 - (4) B, C and D only

- 192** Match **List I** with **List II**.
- | List I | List II |
|--------------------------------|-----------------------------------|
| A. Mast cells | I. Ciliated epithelium |
| B. Inner surface of bronchiole | II. Areolar connective tissue |
| C. Blood | III. Cuboidal epithelium |
| D. Tubular parts of nephron | IV. specialised connective tissue |
- Choose the **correct** answer from the options give below:
- (1) A-III, B-IV, C-II, D-I
 - (2) A-I, B-II, C-IV, D-III
 - (3) A-II, B-III, C-I, D-IV
 - (4) A-II, B-I, C-IV, D-III
- 193** Which of the following is characteristic feature of cockroach regarding sexual dimorphism ?
- (1) Presence of anal cerci
 - (2) Dark brown body colour and anal cerci
 - (3) Presence of anal styles
 - (4) Presence of sclerites
- 194** Select the correct statements.
- A. Tetrad formation is seen during Leptotene.
 - B. During Anaphase, the centromeres split and chromatids separate.
 - C. Terminalization takes place during Pachytene.
 - D. Nucleolus, Golgi complex and ER are reformed during Telophase.
 - E. Crossing over takes place between sister chromatids of homologous chromosome.
- Choose the **correct** answer from the options given below:
- (1) B and E only
 - (2) A and C only
 - (3) B and D only
 - (4) A, C and E only

195 Which one of the following is NOT an advantage of inbreeding?

- (1) It decreases the productivity of inbred population, after continuous inbreeding.
- (2) It decreases homozygosity.
- (3) It exposes harmful recessive genes that are eliminated by selection.
- (4) Elimination of less desirable genes and accumulation of superior genes takes place due to it.

196 The unique mammalian characteristics are:

- (1) pinna, monocondylic skull and mammary glands
- (2) hairs, tympanic membrane and mammary glands
- (3) hairs, pinna and mammary glands
- (4) hairs, pinna and indirect development

197 The parts of human brain that helps in regulation of sexual behaviour, expression of excitement, pleasure, rage, fear etc. are :

- (1) Corpus callosum and thalamus
- (2) Limbic system & hypothalamus
- (3) Corpora quadrigemina & hippocampus
- (4) Brain stem & epithalamus

198 Match **List I** with **List II**.

List I	List II
A. Logistic growth	I. Unlimited resource availability condition
B. Exponential growth	II. Limited resource availability condition
C. Expanding age pyramid	III. The percent individuals of pre-reproductive age is largest followed by reproductive and post reproductive age groups
D. Stable age pyramid	IV. The percent individuals of pre-reproductives and reproductive age group are same

Choose the **correct** answer from the options given below:

- (1) A-II, B-IV, C-III, D-I
- (2) A-II, B-I, C-III, D-IV
- (3) A-II, B-III, C-I, D-IV
- (4) A-II, B-IV, C-I, D-III

199 Which of the following statements are correct ?

- A. Basophils are most abundant cells of the total WBCs
- B. Basophils secrete histamine, serotonin and heparin
- C. Basophils are involved in inflammatory response
- D. Basophils have kidney shaped nucleus
- E. Basophils are agranulocytes

Choose the **correct** answer from the options given below:

- (1) A and B only
- (2) D and E only
- (3) C and E only
- (4) B and C only

200 Which of the following statements are correct?

- A. An excessive loss of body fluid from the body switches off osmoreceptors.
- B. ADH facilitates water reabsorption to prevent diuresis.
- C. ANF causes vasodilation.
- D. ADH causes increase in blood pressure.
- E. ADH is responsible for decrease in GFR.

Choose the **correct** answer from the options given below:

- (1) C, D and E only
- (2) A and B only
- (3) B, C and D only
- (4) A, B and E only

NEET UG 2023 FINAL ANSWER KEY - DATE OF EXAM - 07.05.2023
BOOK CODE : G1

QNO	RES	QNO	RES	QNO	RES	QNO	RES	QNO	RES	QNO	RES	QNO	RES	QNO	RES
1	4	26	4	51	4	76	2	101	1	126	2	151	4	176	3
2	1	27	4	52	4	77	4	102	2	127	4	152	2	177	2
3	4	28	1	53	4	78	1	103	2	128	3	153	4	178	4
4	3	29	3	54	1	79	2	104	4	129	2	154	3	179	2
5	1	30	2	55	3	80	2	105	3	130	3	155	2	180	3
6	4	31	4	56	1	81	1	106	1	131	4	156	1	181	3
7	4	32	3	57	4	82	4	107	2	132	3	157	3	182	3
8	3	33	1	58	3	83	3	108	4	133	4	158	1	183	4
9	1	34	1	59	4	84	2	109	1	134	2	159	3	184	2
10	4	35	3	60	3	85	4	110	3	135	2	160	2	185	2
11	1	36	4	61	3	86	4	111	4	136	2	161	1	186	3
12	5	37	4	62	4	87	4	112	2	137	2	162	2	187	3
13	2	38	4	63	1	88	4	113	2	138	2	163	1	188	4
14	2	39	2	64	1	89	2	114	2	139	4	164	4	189	1
15	2	40	3	65	4	90	4	115	3	140	2	165	3	190	4
16	2	41	3	66	2	91	4	116	3	141	3	166	3	191	4
17	4	42	4	67	4	92	4	117	3	142	4	167	2	192	4
18	3	43	4	68	2	93	3	118	4	143	4	168	3	193	3
19	1	44	2	69	4	94	3	119	1	144	4	169	1	194	3
20	3	45	3	70	4	95	4	120	3	145	3	170	1	195	1
21	2	46	1	71	2	96	1	121	3	146	E	171	3	196	3
22	2	47	4	72	4	97	2	122	2	147	3	172	2	197	2
23	4	48	1	73	2	98	3	123	2	148	2	173	2	198	2
24	4	49	4	74	1	99	2	124	3	149	4	174	3	199	4
25	4	50	1	75	2	100	2	125	4	150	1	175	3	200	3

B DENOTES BOTH 1 & 3 ARE CORRECT
E DENOTES BOTH 2 & 4 ARE CORRECT
5 DENOTES QUESTION IS DROPPED