



JEE Main PYQs on Isomerism: JEE Main Questions for Practice with Solutions

[Overview](#) [Question Paper](#) [Cutoff](#) [Registration](#) [Exam Pattern](#) [Preparation](#) [Mock Test](#) [Result](#) [College Predictor](#) [News](#)

Shivam Yadav
Updated 3+ months ago

The JEE Main Chemistry section requires speed and accuracy, along with a thorough understanding of the Isomerism. This article provides a set of JEE Main PYQs on Isomerism to help you understand the topic and improve your problem-solving skills with the help of detailed solutions by ensuring conceptual clarity, which will help you in the JEE Main 2026 preparation.

Whether you're revising the basics or testing your knowledge, these JEE Main PYQs will serve as a valuable practice resource.

The **JEE Main 2026** exam is likely to continue on the same pattern as JEE Main 2025. Out of 90 questions, students can expect a fair mix from all three subjects. To get an edge, going through JEE Main previous year questions (PYQs) is one of the best strategies.

Also Read

- [JEE Main Syllabus](#)
- [JEE Main Exam Pattern](#)
- [JEE Main Question Paper](#)

JEE Main PYQs on Isomerism

1. Match List - I with List - II.

List - I (Pair of Compounds)	List - II (Isomerism)
(A) n-propanol and Isopropanol	(I) Metamerism
(B) Methoxypropane and ethoxyethane	(IV) Functional Isomerism
(C) Propanone and propanal	(III) Position Isomerism
(D) Neopentane and Isopentane	(II) Chain Isomerism

A (A)–(II), (B)–(I), (C)–(IV), (D)–(III)

B (A)–(III), (B)–(I), (C)–(II), (D)–(IV)

C (A)–(I), (B)–(III), (C)–(IV), (D)–(II)

D (A)–(III), (B)–(I), (C)–(IV), (D)–(II)

[View Solution](#)

2. The one giving maximum number of isomeric alkenes on dehydrohalogenation reaction is (excluding rearrangement)

A 2-Bromopropane

B 2-Bromo-3,3-dimethylpentane

C 1-Bromo-2-methylbutane

Download Free JEE Main Previous Year Papers with Solutions

[Free Download](#)

Get More Info About JEE Main

[Download Sample Papers](#) [Ask a Question](#) [Get More Info](#)


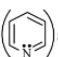

Practice Papers for JEE Main

[JEE Main Question Paper](#)[JEE Main Question Paper 2025](#)[JEE Main Question Paper 2024](#)[JEE Main Question Paper 2023](#)[JEE Main Question Paper 2022](#)[JEE Main Question Paper 2021](#)[JEE Main Question Paper 2020](#)[JEE Main Question Paper 2019](#)[JEE Main Question Paper 2018](#)[JEE Main Question Paper 2017](#)[JEE Main Question Paper 2016](#)[JEE Main Physics Papers](#)[JEE Main Chemistry Papers](#)[JEE Main Maths Papers](#)[JEE Main Practice Papers](#)[JEE Main Test Series](#)[JEE Main Chapterwise Papers](#)[JEE Main Online Test Series](#)[JEE Main B.Arch & B.Planning](#)

WANT TO KNOW MORE?
ASK QUESTIONS TO OUR EXPERTS

☐ D 2-Bromopentane

[View Solution](#)

3. Correct order of basic strength of Pyrrole 
Pyridine  and Piperidine  is:

☐ A Piperidine>Pyridine>Pyrrole

☐ B Pyrrole>Pyridine>Piperidine

☐ C Pyridine>Piperidine>Pyrrole

☐ D Pyrrole>Piperidine >Pyridine

[View Solution](#)

4. Given below are two statements:

Statement (I):



Statement (II):



In the light of the above statements, choose the correct answer from the options given below:

☐ A Both Statement I and Statement II are true

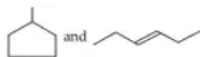
☐ B Statement I is false but Statement II is true

☐ C Statement I is true but Statement II is false

☐ D Both Statement I and Statement II are false

[View Solution](#)

5. Given below are two statements: Statement (I):



are isomeric compounds.

Statement (II):



are functional group isomers.

In the light of the above statements, choose the correct answer from the options given below:

☐ A Both Statement I and Statement II are true

☐ B Statement I is false but Statement II is true

☐ C Statement I is true but Statement II is false

☐ D Both Statement I and Statement II are false

JEE Main PYQ

You can also check

JEE Main Overview

JEE Main Question Paper

JEE Main Cutoff

JEE Main Registration

JEE Main Exam Pattern

JEE Main Preparation

JEE Main Mock Test

JEE Main Result

JEE Main College Predictor

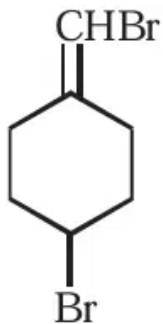
JEE Main News

JEE Main Q&A

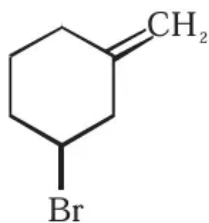
JEE Main Participating Colleges

6. Which one of the following will show geometrical isomerism?

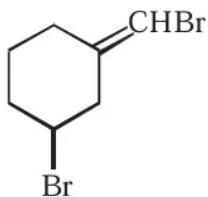
A



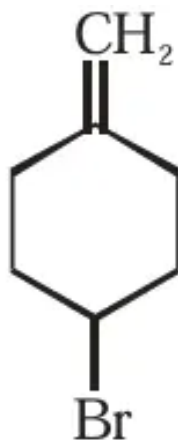
B



C



D



View Solution

7. Given below are two statements : one is labelled as Assertion (A) and the other is labelled as Reason (R).

Assertion (A): Cis form of alkene is found to be more polar than the trans form

Reason (R): Dipole moment of trans isomer of 2-butene is zero. In the light of the above statements.

Choose the correct answer from the options given below :

A

Both (A) and (R) are true but (R) is NOT the correct explanation of (A)

B

(A) is true but (R) is false

☐ C Both (A) and (R) are true and (R) is the correct explanation of (A)

☐ D (A) is false but (R) is true

[View Solution](#)

8. Given below are two statements: one is labelled as Assertion (A) and the other is labelled as Reason (R).

Assertion (A): The total number of geometrical isomers shown by $[\text{Co}(\text{en})_2\text{Cl}_2]^+$ complex ion is three.

Reason (R): $[\text{Co}(\text{en})_2\text{Cl}_2]^+$ complex ion has an octahedral geometry.

In the light of the above statements, choose the most appropriate answer from the options given below:

☐ A Both (A) and (R) are correct and (R) is the correct explanation of (A).

☐ B (A) is correct but (R) is not correct.

☐ C (A) is not correct but (R) is correct.

☐ D Both (A) and (R) are correct but (R) is not the correct explanation of (A).

[View Solution](#)

9. The number of isomeric forms that are represented by $\text{C}_7\text{H}_9\text{N}$ is:

☐ A 5

☐ B 2

☐ C 6

☐ D 9

[View Solution](#)

10. The incorrect statements regarding geometrical isomerism are:

(A) Propene shows geometrical isomerism.

(B) Trans isomer has identical atoms/groups on the opposite sides of the double bond.

(C) Cis-but-2-ene has higher dipole moment than trans-but-2-ene.

(D) 2-methylbut-2-ene shows two geometrical isomers.

(E) Trans-isomer has lower melting point than cis isomer.

☐ A (A), (D) and (E) only

☐ B (C), (D) and (E) only

☐ C (B) and (C) only

☐ D (A) and (E) only

[View Solution](#)

[View More JEE Main Questions](#)

How likely are you to recommend collegedunia.com to a friend or a colleague?

1

2

3

4

5

6

7

8

9

10

Not so likely

Highly Likely

5

shares



SHARE ON FACEBOOK



SHARE ON TWITTER

Fees Structure

Structure based on different categories

Categories	State
General	1000
Women	800
sc	500
pwd	500
Others	900

Note: The application fee for choosing exam centers in India and countries other than India varies.

In case of any inaccuracy, Notify Us!

Yes

No

Comments

Write your comment here...

Login To Add Comment

NO COMMENTS TO SHOW

SUBSCRIBE TO OUR NEWS LETTER

COLLEGE NOTIFICATIONS • EXAM NOTIFICATIONS • NEWS UPDATES

ENTER YOUR EMAIL ID

+91 ENTER YOUR MOBILE NO

CHOOSE YOUR COURSE



SUBMIT

TOP COLLEGES

M.B.A
B.TECH/B.E
MCA
BCA
M.TECH
MA
BA

TOP UNIVERSITIES

ENGINEERING
MANAGEMENT
MEDICAL
LAW
COMMERCE
SCIENCE
ARTS

TOP EXAM

CAT
GATE
JEE-MAIN
NEET
XAT
CLAT
MAT

STUDY ABROAD

CANADA
USA
UK
UAE
AUSTRALIA
GERMANY
SWEDEN

IRELAND
NEW ZEALAND
HONG KONG
SINGAPORE
MALAYSIA
NETHERLANDS
ITALY

OTHER LINKS

ABOUT COLLEGEDUNIA
CONTACT US
ADVERTISING
CAREER
TERMS & CONDITIONS

Download the Collegedunia app on



